

QCTHS

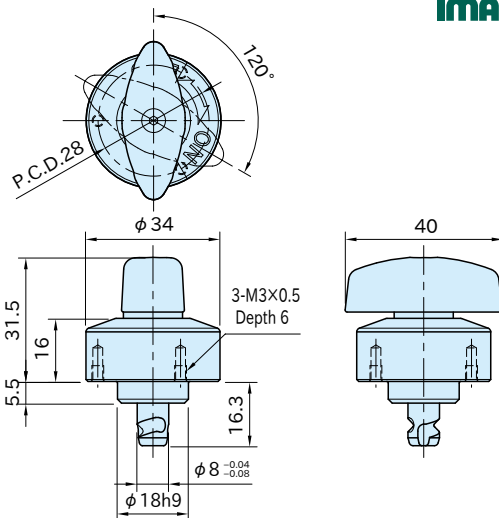
HEAVY DUTY QUARTER-TURN CLAMPS



QCTHS0834-20
(Plastic Knob)



QCTHS0834-20S
(Metal Knob)



★Key Point

Clamping force 400N

Part Number	Body	Shank	Pin	Knob	Spring A	Spring B
QCTHS0834-20	SUS303 stainless steel	SKS3 steel	SUS440C stainless steel	Polyamide (glass-fiber reinforced)	Equivalent to SWOSC-V steel	SUS304 stainless steel
QCTHS0834-20S		Electroless nickel plated		Black		
		Quenched and tempered		SCS13 stainless steel (Equivalent to SUS304)		

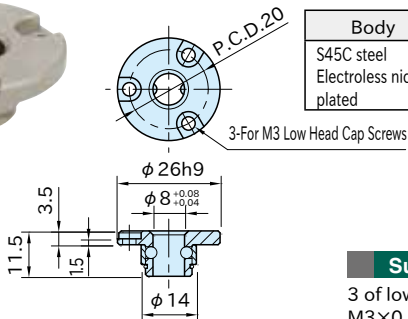
Part Number	Proper Plate Thickness	Clamping Force(N)	Weight (g)
QCTHS0834-20	6~20	400	121
QCTHS0834-20S			157

Supplied With

3 of socket-head cap screws(stainless steel), M3×0.5-6L

QCTHS-B

LOCKING RECEPTACLE



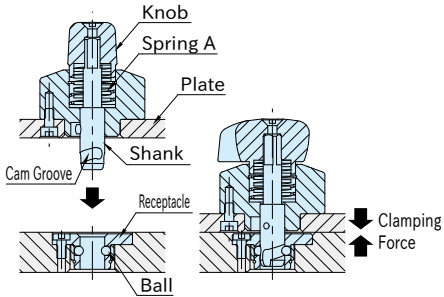
Body	Ball	Collar	Retaining Ring
S45C steel Electroless nickel plated	SUS440C stainless steel	SKS3 steel Electroless nickel plated Quenched and tempered	SUS304WPB stainless steel

Part Number	Weight (g)
QCTHS0834-B	19

Supplied With

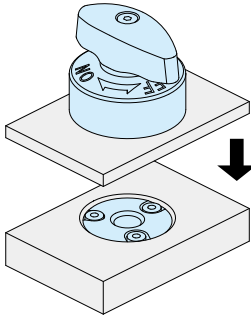
3 of low head cap screws(stainless steel), M3×0.5-6L

Feature

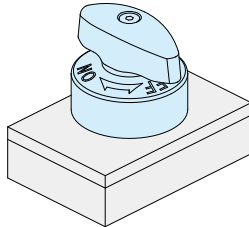


When the cam groove moves along the ball inside the receptacle, the spring A gets compressed to press down the plate.

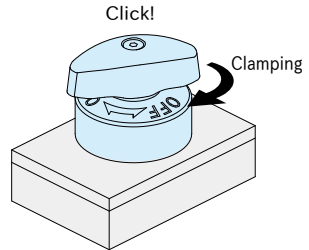
How To Use



1. Ensure that the knob is positioned at the "OFF" mark.



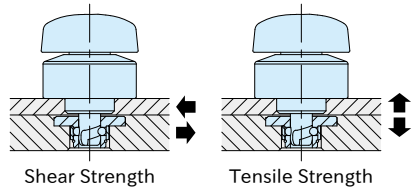
2. Insert the Heavy Duty Quarter-Turn Clamp.



3. Turn the knob to the "ON" mark for clamping. The knob clicks when it is clamped/unclamped.

Note: For unclamping, follow back these steps.

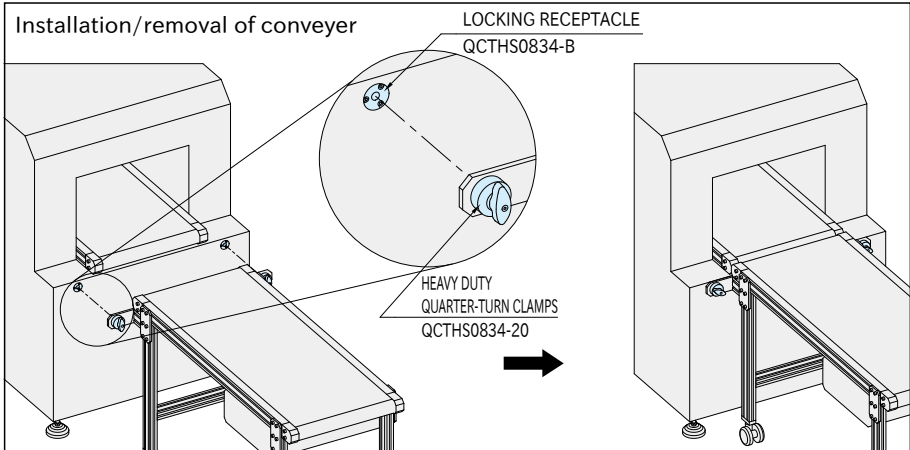
Technical Information



Part Number	Heatresistant Temperature (°C)	Shear Strength (N)	Tensile Strength (N)
QCTHS0834-20	130	4800	1600
QCTHS0834-20S	200		

Application Example

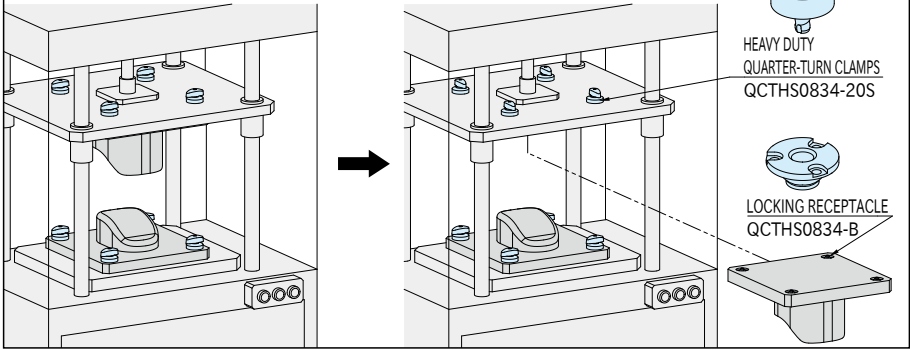
Installation/removal of conveyer



Continuing on Next Page

Application Example

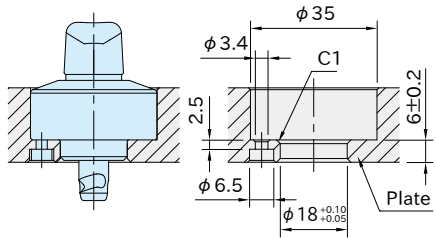
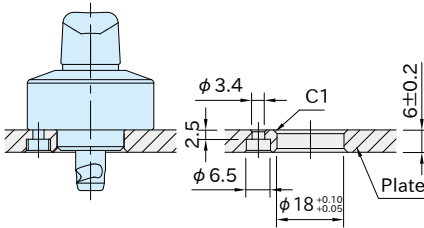
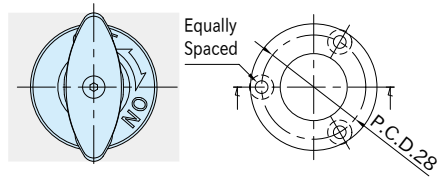
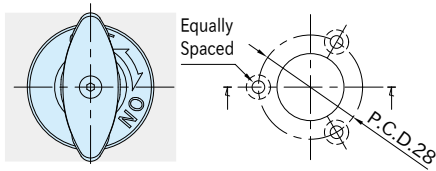
Changes of mold



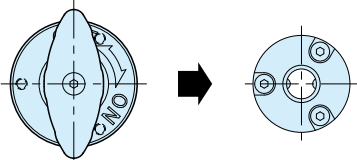
How To Install Quarter-Turn Clamp

When plate thickness is 6mm.

When plate thickness is over 6mm, 20mm or less.



Installing Position

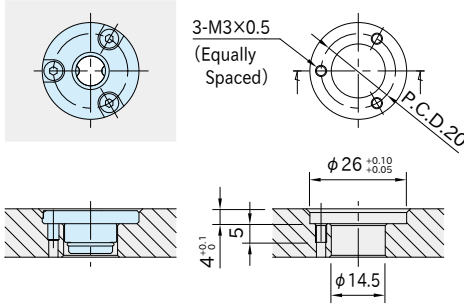


HEAVY DUTY
QUARTER-TURN CLAMPS

LOCKING
RECEPTACLE

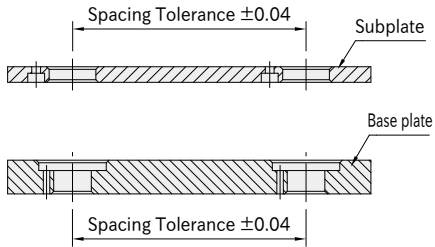
How To Install Receptacle

Plate thickness should be 9mm or more.



Accuracy

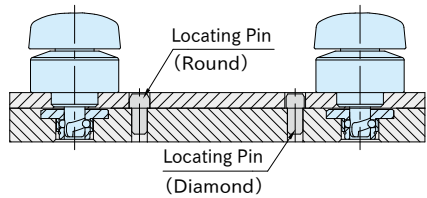
■ Machining Accuracy



Spacing tolerance on both the subplate and the base plate should be ± 0.04 .

■ Repeatability

Repeatability ± 0.1



For higher accurate locating, use locating pins.