

S2320-00M

PART NO.

SUPERSEDED BY

SUPERSEDES

ENG. OR FILE OR

USED ON:

PART NO.

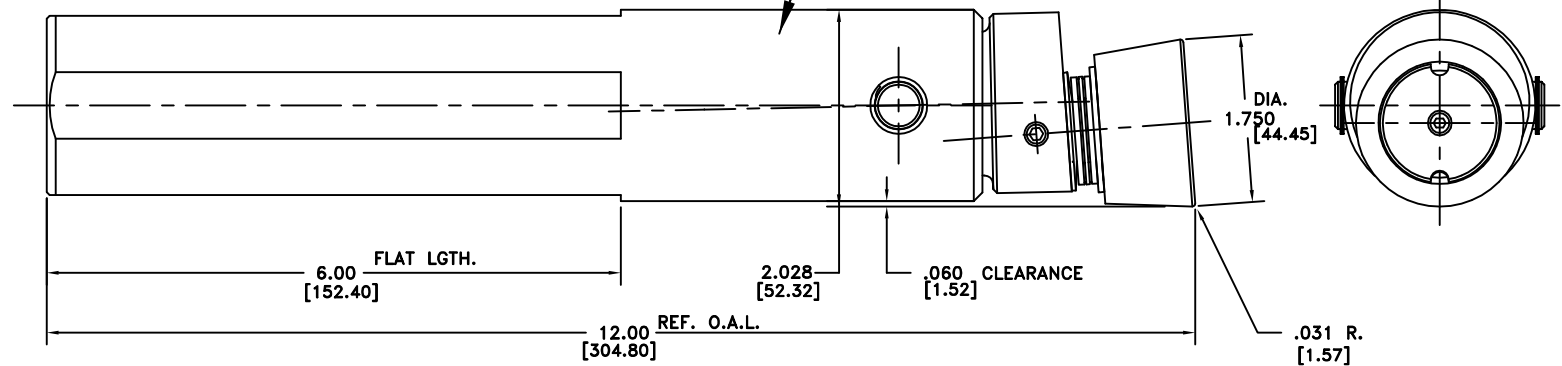
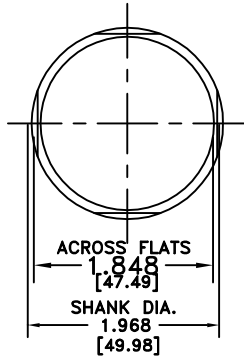
S2320-00M

SHEET NO. OF

ENG. CHANGE NO.

ASSEMBLY NOTE:  
MARK NAME PLATE AT ASSEMBLY  
S2320-00M

TOOL SHOWN IN DEFLECTED POSITION

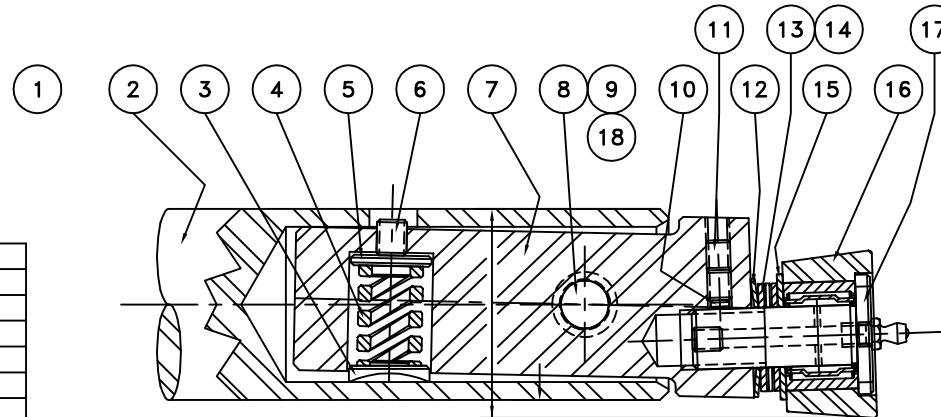


PLACE ORING ON PIVOT PIN BETWEEN THE ROLLER SHAFT AND THE SHANK ASSEMBLY

| SPRING PRESSURE INFORMATION |          |                             |          |
|-----------------------------|----------|-----------------------------|----------|
| COMPRESSION SPRING (DET. 4) |          | BELLEVILLE SPRING (DET. 12) |          |
| DEFLECTION                  | PRESSURE | DEFLECTION                  | PRESSURE |
| .100 [2.54]                 | 140 LBS. | .011 [0.27]                 | 95 LBS.  |
| .150 [3.81]                 | 210 LBS. | .022 [0.56]                 | 145 LBS. |
| .200 [5.08]                 | 280 LBS. | .033 [0.84]                 | 165 LBS. |
| .250 [6.35]                 | 350 LBS. | .044 [1.11]                 | 170 LBS. |

WEIGHT 8.968 LBS. VOLUME 46.47 IN.<sup>3</sup>

| QTY | PART NAME          | PART NUMBER | REQ. | CHG. OUT |
|-----|--------------------|-------------|------|----------|
| 18  | ORING              | P8309-9A    | 2    |          |
| 17  | AXLE               | S2075D10    | 1    |          |
| 16  | ROLL               | S2075-05    | 1    |          |
| 15  | BEARING RACE       | S2075D17    | 1    |          |
| 14  | THRUST BEARING     | P1067-1     | 1    |          |
| 13  | THRUST RACE        | P1067K      | 2    |          |
| 12  | BELLEVILLE SPRING  | 579-94      | 1    |          |
| 11  | SOC.SET SCREWS     | 128N        | 3    |          |
| 10  | BRASS SLUGS        | 4236H1AP    | 2    |          |
| 9   | RETAINING RINGS    | P8286-50    | 2    |          |
| 8   | PIVOT PIN          | S1920D12    | 1    |          |
| 7   | ROLLER SHAFT       | S2320D7     | 1    |          |
| 6   | SOC.SET SCREW      | 173W        | 1    |          |
| 5   | SLUG               | S1920D17    | 1    |          |
| 4   | COMPRESSION SPRING | S1969-39    | 1    |          |
| 3   | SLUG               | S1920D15    | 1    |          |
| 2   | SHANK ASSEMBLY     | S2320-12M   | 1    |          |
| 1   | ASSEMBLED TOOL     | S2320-00M   | ~    |          |



TOOL SHOWN IN HOME POSITION

NOTE:

1) GREASE LUBRICATE TOOL WITH LUBRICATION FITTING IN PLACE. IF NECESSARY REMOVE LUBRICATION FITTING AND REPLACE WITH SOC. SET SCREW THAT IS SHIPPED WITH ASSEMBLED TOOL.

2) NEEDLE BEARING SUPPLIED WITH ROLL (DET.16).

OK  
S.G.P.  
9/25/08



|   |                                |
|---|--------------------------------|
| THIS DRAWING CONTAINS INFORMATION OF A PROPRIETARY NATURE AND IS ISSUED FOR REFERENCE USE ONLY AND MAY NOT BE COPIED, REPRODUCED OR USED TO MANUFACTURE ANYTHING SHOWN HEREON WITHOUT WRITTEN PERMISSION. |                                |
| NAME  | CARBIDE-ROLLER BURNISHING TOOL |
| DR. BY:   | S.G.Poettinger 7.2.08          |
| CHK. BY:  | R.T. (07-11-08)                |
| SCALE =   | N.T.S.                         |
| PART NO.  | S2320-00M                      |
| TOOL NO.  |                                |
| PROJECT NO.   | Q14358KM                       |